

# flexcolor

FC600 / FC1200

**FOMEX**<sup>®</sup>



# Contents

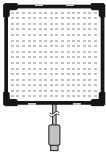
In the Box	-----	2
Controller Overview	-----	3
Button Control Guide		
How to connect	-----	4
How to install the X-Mount		
How to Install the Clamp Shoe		
How to Install the Softbox	-----	5
Accessories (Optional)		
Technical Specifications	-----	6
Notice	-----	7
Warranty	-----	8
Inapplicable Warranty		

Please read the instructions before using the product.

While operating, if any abnormal condition or malfunction is observed, stop using the product immediately and contact the authorized dealer of its purchase location.

## In the Box

### FC600 Kit



FC600 Mat



X-Mount Bracket



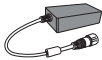
Controller



Output Cable(2m)



Extension Cable(5m)



Power Supply



Power Code(5m)

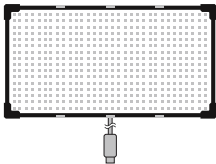


Clamp Shoe



Kit Bag

### FC1200 Kit



FC1200 Mat



X-Mount Bracket



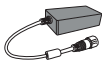
Controller



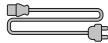
Output Cable(2m)



Extension Cable(5m)



Power Supply



Power Code(5m)

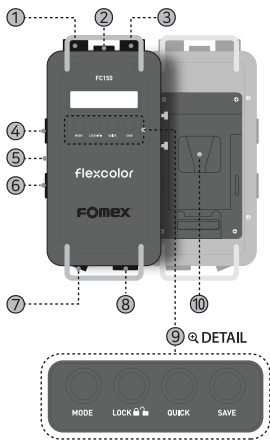


Clamp Shoe



Kit Bag

## Controller Overview



- ① SEL Knob (Refer to description)
- ② Output Port
- ③ ADJ Knob (Refer to description)
- ④ DMX In  
The DMX indicating LED turns green when the connection is complete.
- ⑤ USB (5V DC Out)
- ⑥ DMX OUT
- ⑦ ON/OFF Switch
- ⑧ DC Input
- ⑨ Button Control (Refer to description)
- ⑩ Battery Plate  
( Standard: V-Mount, Optional: Gold Mount )

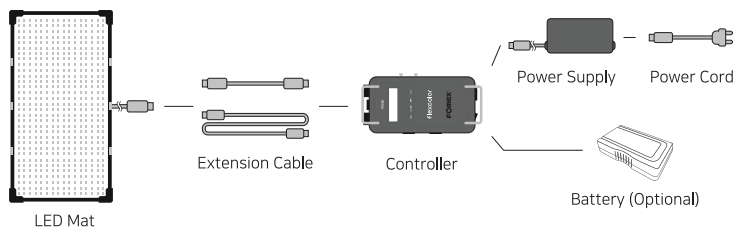
## Button Control Guide

- MODE :** Press the button to select Display Mode in the order of CCT > HSI > RGB > GEL > Effects > X,Y Control. Press the button for 2 seconds to activate the Settings mode.
- LOCK :** Press the button for 2 seconds to activate the LOCK mode, and press again for 2 seconds to release it.
- QUICK :** The Quick mode can be set from Q1 to Q5. Press the button for 2 seconds to do a Quick Reset.
- SAVE :** Press the Quick button to select one of Q1~Q5, set the desired value, and press the Save button to save it. If you press the button for 2 seconds, it activates CRMX Unlinked.
- SEL :** Select a sub-setting by turning the knob. Pressing the button activates the Settings mode.
- ADJ :** Adjust the value by turning the knob in the selected mode. Press the button for 2 seconds to change the value of Step Mode.

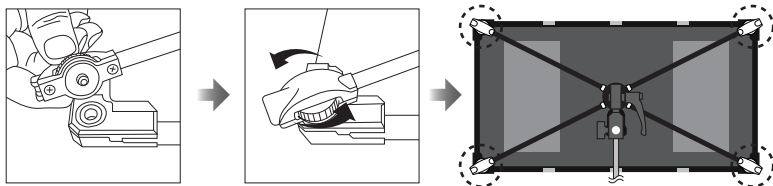
## How to connect

Please connect the power supply or battery in the following order.

\* Please use the supplied extension cable only.



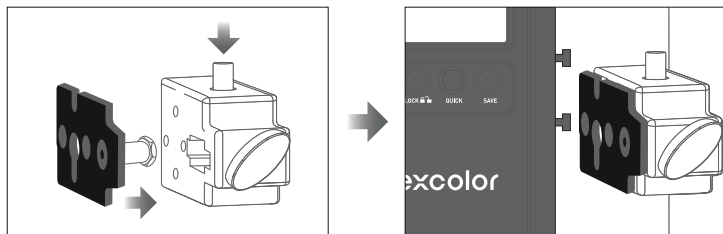
## How to install the X-mount



Install the X-mount by inserting the screw thread in the mat corner hole.

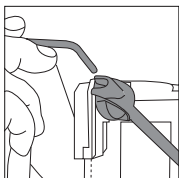
Installation complete.

## How to Install Clamp Shoe

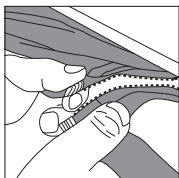


Mount the clamp with the Clamp Shoe to a light stand then, the controller.

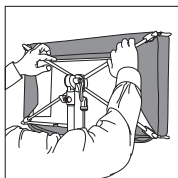
## How to install the Softbox



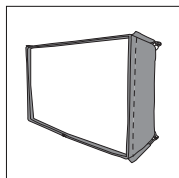
Insert the softbox pole into the X-mount corner.



Close the softbox zipper.

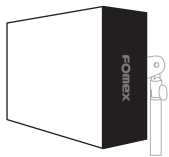


Secure the softbox wings to the back of the mat with hook-and-loop fastener.

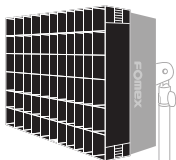


Attach the diffuser to the softbox. Installation complete.

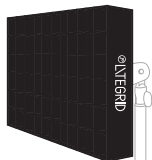
## Accessories (Optional)



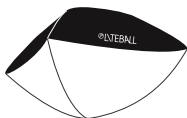
Softbox



LTGD  
LiteGrid for Softbox



FMGD  
LiteGrid for Mat



LTBK  
LiteBall



Boom Pole 3Sections

## Technical Specifications



Mat Spec.	FC600	FC1200
Light Output	1900Lux, 170FC (@1m, 2700K) 2000Lux, 185FC (@1m, 6500K)	3900Lux, 362FC(@1m, 2700K) 4000Lux, 371FC(@1m, 6500K)
Power Consumption	60W	120W
CRI / TLCI	CRI Average > 95 / TLCI Average > 98	
Color Temperature	2,000K° ~ 10,000K°	
White Light	Full RGB + WW Color	
Input Connector (Waterproof)	8Pin × 1	
IP Rating (Mat Only)	IP64	
Beam Angle	120°	
LEDs	576	1152
Mat Dimensions(cm)	30 × 30	30 × 58
Mat Weight (g)	440	760
<b>Controller</b>		
CCT	2,000K° ~ 10,000K°	
DIM	0~100%	
Input	19V DC	
Output Connector	8Pin × 1	
DC Out	5V DC ( USB for WDMX )	
DMX / RDM	Supported	
Display	Mono LCD	
Battery Mounts	V-Mount / Gold Mount	
Dimensions (cm)	23.5 × 11 × 8	
Weight (g)	935	
<b>Power Supply</b>		
Input	AC100~240V 50/60Hz	
Output	19V $\overline{=}$ 11.58A, 220W	



## Notice

---

Be sure to read the operating instruction before using the product.

- Check the input voltage.
- Mat is IP64 rated and it has a protection against dust and splashed water but should not put into the water.
- When Mat is wet, dry surface and store in dry place. (The controller is not waterproof.)
- Keep away from flammable objects.
- The proper operating temperature is from 0°C ~ 40°C.
- Do not expose the product to extreme cold or hot.
- Keep away from children.
- Do not drop or give a shock to the product.
- It must be connected to ground socket. 
- Do not disassemble the product. It might be had an electric shock. 
- Internal components are not allowed to repair without any authorized permission.
- After using the product, keep it into the supplied bag/case after fully cooling.
- The distance from the ventilation shaft of the product is 0.1m at least.
- All specification of the product is subject to change without any prior notice for further improvement.





# Warranty

Fomex's warranty provisions of the product are listed as below.

When a defect occurs within the warranty period, it will be repaired with new or refurbished parts for free.

Or, it will be replaced with a new product or a functionally equivalent refurbished product.

This warranty applies only to products manufactured by Fomex that can be identified by the trademark, trade name, or logo affixed to the product.

In this case, the accessories are not covered by the warranty period.

## Inapplicable Warranty

The following cases are excluded from the warranty terms specified above.

1. Expired warranty period
2. Breakage or damage caused by inappropriate usage, repair, maintenance and accident.
  - 1) Installation and removal with improper external equipment or improper usage.
  - 2) Damage to the product caused by external fault or any accident.
  - 3) Exposure to the extreme environment such as abnormal temperature, a solvent, an acid, a base, a flood and a humidity.
  - 4) External damage like scratch, crush or crack.
  - 5) If the serial number is defected or can not be identified.
3. Damage caused by installation, repair, improvement, addition, disassembly by unauthorized institution or person.
4. Modified, replaced, removed information identifying the original product
5. Absence of valid warranty card
6. Unusable or damage caused by use of illegal nonstandard and unofficial software
7. Damage caused by accident, abuse, misuse, flood, fire, earthquake or other external causes.

Please keep the confirmation of purchase and this warranty card for future service.

Customer Information	Name	
	Contact Number	
	Address	
Seller Information	Name	
	Contact Number	
	Address	
	Purchasing date	
Product	Name	

# FOMEX®

[www.fomex.com](http://www.fomex.com)

7th Floor, 31-18Gil, Seongsui-ro, Seongdong-gu, Seoul Korea 04787

Tel: +82 2 545 0004 Fax: +82 2 3444 9399 E-mail: [info@fomex.com](mailto:info@fomex.com)

All product specifications are subject to change without notice.

**CE** **RoHS**  

VER.202205(EN)