

ROILNTE

RL41M-150

FOMEX[®]



Contents

In the Box	-----	1
Controller's Part Names, Button Control Guide	-----	2
How to connect controller, Set Up X-Mount	-----	3
How to Install Clamp Shoe, Accessories (Optional)	-----	4
Technical Specifications	-----	5
Notice	-----	6
Warranty	-----	7

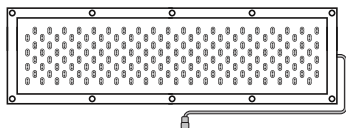
Please read the operating instruction before using the product.

While operating, if any abnormal condition or malfunction is observed, stop using the product immediately and contact the authorized dealer of its purchase location.



In the Box

RL41M-150 Kit



RL41M-150
(PN : 4565720)



X-Mount Bracket
(PN : 4565730)



Controller
(PN : 4565060)



Output Cable(2m)
(PN : 4566440)



Extension Cable(5m)
(PN : 4566450)



Power Supply
(PN : 4550060)



Power Cable(5m)

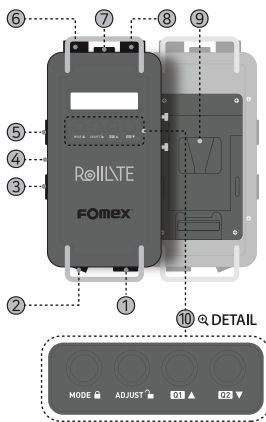


Kit Bag
(PN : 0565010)



Clamp Shoe
(PN : 4540901)

Controller's Part Names, Button Control Guide



- ① DC Input
- ② ON/OFF Switch
- ③ DMX Out
- ④ USB (5V DC Out)
- ⑤ DMX In
DMX indicating LED turns on green when connection function works.
- ⑥ CCT Knob (Color Temperature Adjustment)
- ⑦ Output Port
- ⑧ Dimming Knob (Brightness Adjustment)
- ⑨ Battery Plate
(Standard: V-Mount, Optional: Gold Mount)

⑩ Button Control Guide

Lock CCT and DIM :

Press 'MODE' button for 2~3 seconds. LOCK is displayed and turns into LOCK mode. Once in Lock mode, CCT and DIM cannot be changed.

Unlock :

Press 'ADJUST' button for 2~3 seconds to release.

Quick Mode:

Short Press 'MODE' button to change to Quick Mode. The Default setting of Q1(3200K), Q2(5600K) can be changed. DIM and CCT can be adjusted to desired value.

Set desired CCT/DIM :

Press 'ADJUST' button on Quick Mode. When CCT and DIM value blink, Set to the desired value using the dial, then press 'ADJUST' button again to save.

Release QUICK Mode :

Press 'MODE' button once to get DMX channel setting screen. (CCT and DIM value goes back to the previous value in normal mode)

Set DMX Channel :

Short press 'MODE' button twice, DMX is displayed and channel blinks for change. Then set the channel using ▲▼ button and press 'ADJUST' button to save. (once you connect DMX Console, DMX channel mode displays automatically.)

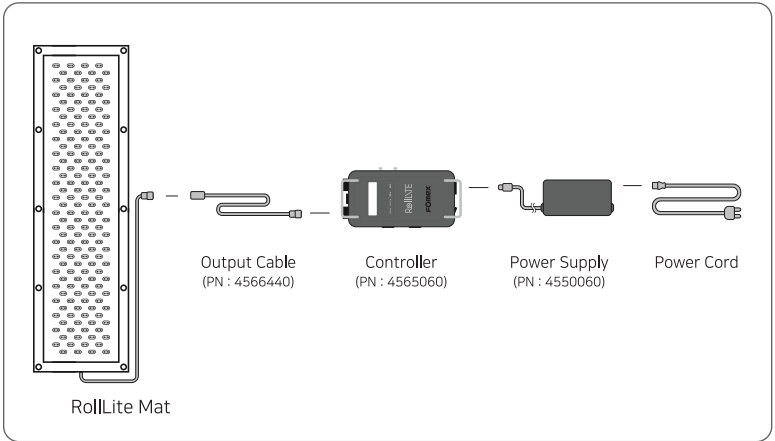
Press 'MODE' button once and change the channel using ▲▼ button and press 'ADJUST' button to save.)

* Sequence of Mode Conversion : Normal Mode → Quick Mode → DMX Channel Setting Mode → Normal Mode



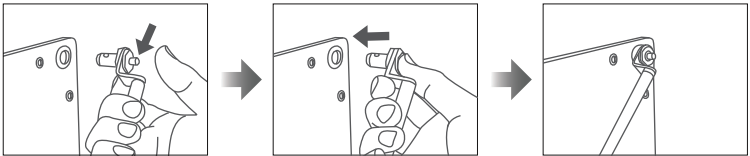
How to connect controller

Please connect the power supply of battery in the following order.



* Please use the cables provided.

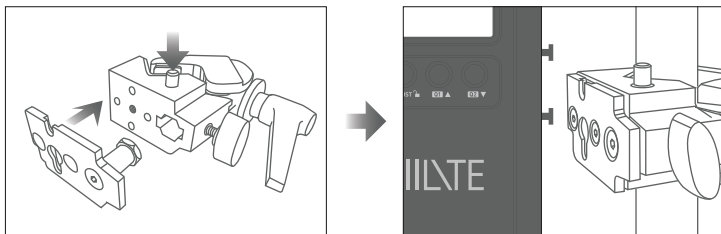
Set Up X-Mount



The included X-Mount frame can be quickly and easily mounted to the RollLite with locking push pin.



How to Install Clamp Shoe



1. Attach a clamp shoe included in the kit to the Clamp adaptor and mount it on a light stand.
2. Attach a controller to the Clamp adaptor shoe.

Accessories (Optional)



RLSB for RollLite Mat



RLGD for Softbox





Technical Specifications

Spec.	RL41M-150	
Light Output	3100lux @1m; 2700K, 3500lux @1m; 6500K	
Power Consumption	150W	
CRI / TLCI	CRI 96~98 / TLCI 98	
Color Temperature	2700K~6500K	
Dimmer	0~100% DIM / DMX 512 / Manual	
Color Temp. Control	100K Steps	
Output Connector (Waterproof)	6Pin × 1	
IP Rating (Mat Only)	IP64	
Input	12-24V DC (4Pin)	
DC Out	5V DC (USB Port for WDMX)	
DMX In / Out	5Pin XLR	
Beam Angle	120°	
LEDs	624	
Display	Mono LCD	
Mat Dimensions (ft)	4' × 1' (120 × 35cm)	
Mat Weight (g)	800	
Battery Mounts	V-Mount / Gold Mount	
Controller Dimensions	234 × 108 × 79.7cm	
Controller Weight (g)	935	
Power Supply	Input	AC100~240V, 50/60Hz
	Output	19V DC 11.58A



Notice

Be sure to read the operating instruction before using the product.

- Check the input voltage.
- Disconnect the product from the power supply before replacing the fuse.
Use the specified fuse only.
- Mat is IP64 rated and it has a protection against dust and splashed water but should not put into the water.
- When Mat is wet, dry surface and store in dry place. (The controller is not waterproof.)
- Keep away from flammable objects.
- The proper operating temperature is from 0°C ~ 40°C.
- Do not expose the product to extreme cold or hot.
- Keep away from children.
- Do not drop or give a shock to the product.
- It must be connected to ground socket. 
- Do not disassemble the product. It might be had an electric shock. 
- Internal components are not allowed to repair without any authorized permission.
- After using the product, keep it into the supplied bag/case after fully cooling.
- The distance from the ventilation shaft of the product is 0.1m at least.
- All specification of the product is subject to change without any prior notice for further improvement.



Warranty

Fomex's warranty provisions of the product are listed as below.

When a defect occurs within the warranty period, it will be repaired with new or refurbished parts for free.

Or, it will be replaced with a new product or a functionally equivalent refurbished product.

This warranty applies only to products manufactured by Fomex that can be identified by the trademark, trade name, or logo affixed to the product.

In this case, the accessories are not covered by the warranty period.

Inapplicable Warranty

The following cases are excluded from the warranty terms specified above.

1. Expired warranty period
2. Breakage or damage caused by inappropriate usage, repair, maintenance and accident.
 - 1) Installation and removal with improper external equipment or improper usage.
 - 2) Damage to the product caused by external fault or any accident.
 - 3) Exposure to the extreme environment such as abnormal temperature, a solvent, an acid, a base, a flood and a humidity.
 - 4) External damage like scratch, crush or crack.
 - 5) If the serial number is defected or can not be identified.
3. Damage caused by installation, repair, improvement, addition, disassembly by unauthorized institution or person.
4. Modified, replaced, removed information identifying the original product
5. Absence of valid warranty card
6. Unusable or damage caused by use of illegal nonstandard and unofficial software
7. Damage caused by accident, abuse, misuse, flood, fire, earthquake or other external causes.

Please keep the confirmation of purchase and this warranty card for future service.

Customer Information	Name	
	Contact Number	
	Address	
Seller Information	Name	
	Contact Number	
	Address	
	Purchasing date	
Product	Name	



www.fomex.com

7th Floor, Seongsui-ro, Seongdong-gu, Seoul Korea 04787

Tel: +82 2 545 0004 Fax: +82 2 3444 9399 E-mail: info@fomex.com



VER.202007(EN)